

# Viavi OneAdvisor ONA-1000 400G Software Update Instructions



April 29, 2020

## Table of Contents

Scope.....	2
1. Network Upgrade .....	2
2. USB Upgrade .....	8
3. StrataSync.....	12

## Scope


The ONA-1000 platform base software includes software for the 400G module and supported Fiber Optics modules (OTDR, etc.). The 100G module, for the ONA-1000, is upgraded separately. This procedure addresses upgrade to the software for the ONA-1000, the 400G module and supported Fiber Optic modules. To upgrade the ONA-1000 100G module, consult the “ONA-1000 100G software upgrade procedure”.

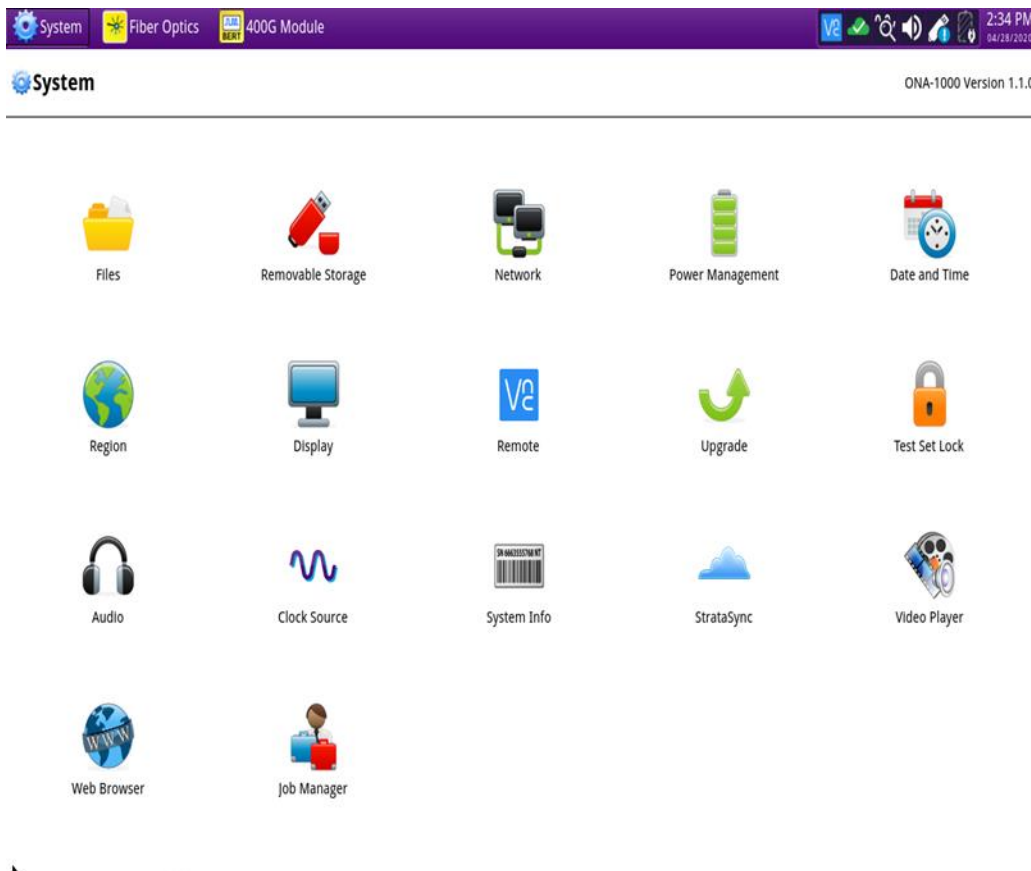
There are three methods to update ONA-1000 software:

1. Network upgrade - Use this method to update your ONA-1000 via an Internet connection.
2. USB upgrade - Use this method to update your ONA-1000 with a USB thumb drive.
3. StrataSync upgrade - Use this method if your ONA-1000 is managed using Viavi’s StrataSync Asset Management system and your company has elected to deploy software via this method.

The ONA must be connected to AC Power, regardless of update method. Please note that network upgrades are NOT supported over WiFi.


## 1. Network Upgrade

<i>Step</i>	<i>Action</i>	<i>Details</i>
1.	Power On	Press and release the ON/OFF button to turn on the ONA-1000.
2.	AC Power	Connect the AC power adapter to the power connector on the right side of the mainframe.
3.	LAN Connection	Connect the Ethernet Management Port, on the right side of the mainframe, to a network connection with internet access, using CAT 5E or better cable.
4.	System	Press the System icon,  , at the top of the start-up screen, to display the System Menu.



## 5. Network Settings



Press the Network icon,  , to display LAN Settings. Set **IP Mode** to “**DHCP**” for automatic IP address assignment or “**Static**” for manual input. If using a static address, be sure to configure the DNS server for an accurate address or the upgrade will fail to locate the upgrade server.

System > Network ONA-1000 Version 1.1.0

LAN

IPv4

IP mode: DHCP MAC address: 00:80:16:A0:2C:81

IP address: 10.12.54.172 Subnet mask: 255.255.255.0


Gateway: 10.12.54.1 DNS server: 10.107.135.50

IPv6

IPv6 mode: Disabled


VLAN

VLAN ID: 100

After configuring LAN settings, press the System icon, , to redisplay the System Menu.



## 6. Upgrade

Press the Upgrade icon, , to display upgrade methods.

System Fiber Optics 400G Module 2:34 PM 04/28/2020

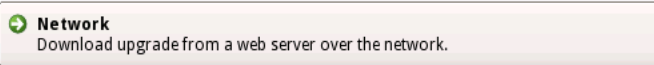
System > Upgrade ONA-1000 Version 1.1.0

Select your upgrade method:

- USB Upgrade from files stored on a USB flash drive.
- Network Download upgrade from a web server over the network.

Start Over

7. Network Upgrade

Press  to display upgrade settings. Press Reset to Default to ensure the server address name is correct.



Enter the address of the upgrade server:


Server address

 **Connect**  
Query the server for available upgrades.

 Start Over

 Reset to Default

8. Connect

Press  to show the upgrade versions available at upgrademyunit.net.

System Fiber Optics 400G Module 9:00 AM 04/30/2020

System > Upgrade ONA-1000 Version 1.1.0

Name	Upgrade Version	Date	Installed Version	Date
bert_tester	1.1.0-1	04/27/2020	1.1.0-1	04/27/2020

Previous Next Start Upgrade

Start Over

9. Start Upgrade

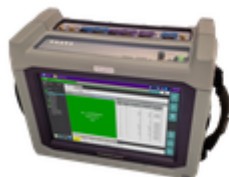
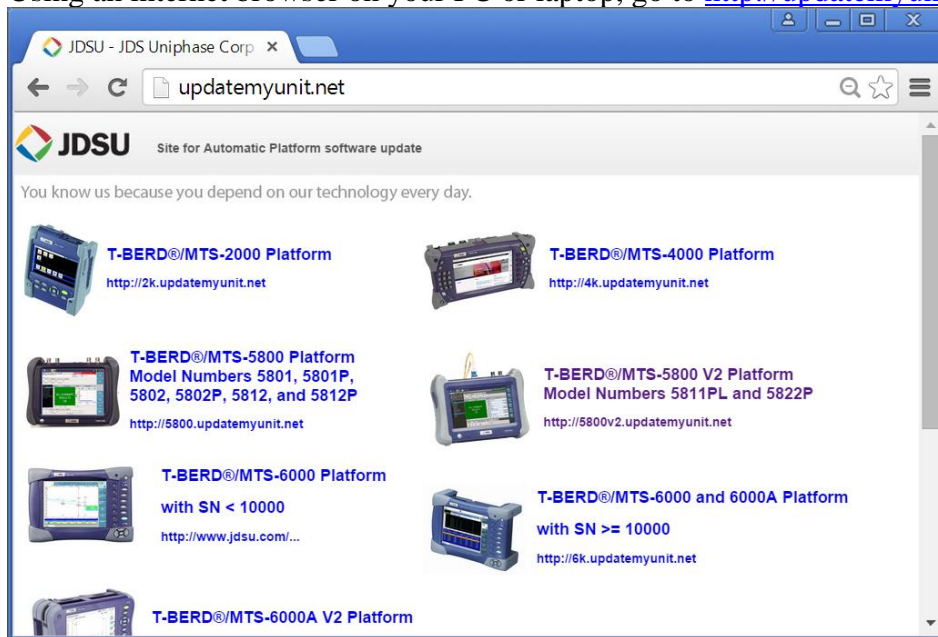
Press , and press  to initiate the upgrade.

## 2. USB Upgrade


*Step*    *Action*                      *Details*


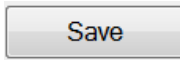
---

1.        Updatemyunit.net        Using an internet browser on your PC or laptop, go to <http://updatemyunit.net/>

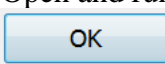


**OneAdvisor-1000 Platform**  
<http://ona-1000.updatemyunit.net>

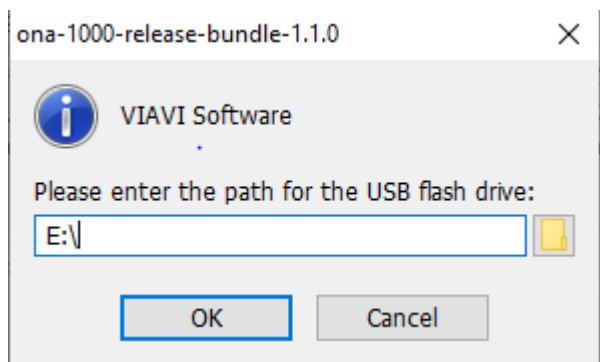
2.        ONA-1000                      Click on the  to display the OneAdvisor ONA-1000 upgrade page.


3.        Download                          Click on the icon for the desired server to start the download from that server. There are icons for three servers: EMEA, NORTH AMERICA or APAC server. For example, North America . Click  to download the current software revision from that server, if prompted. Do NOT save the download directly to the USB stick. Save to your PC and wait for the download to complete.

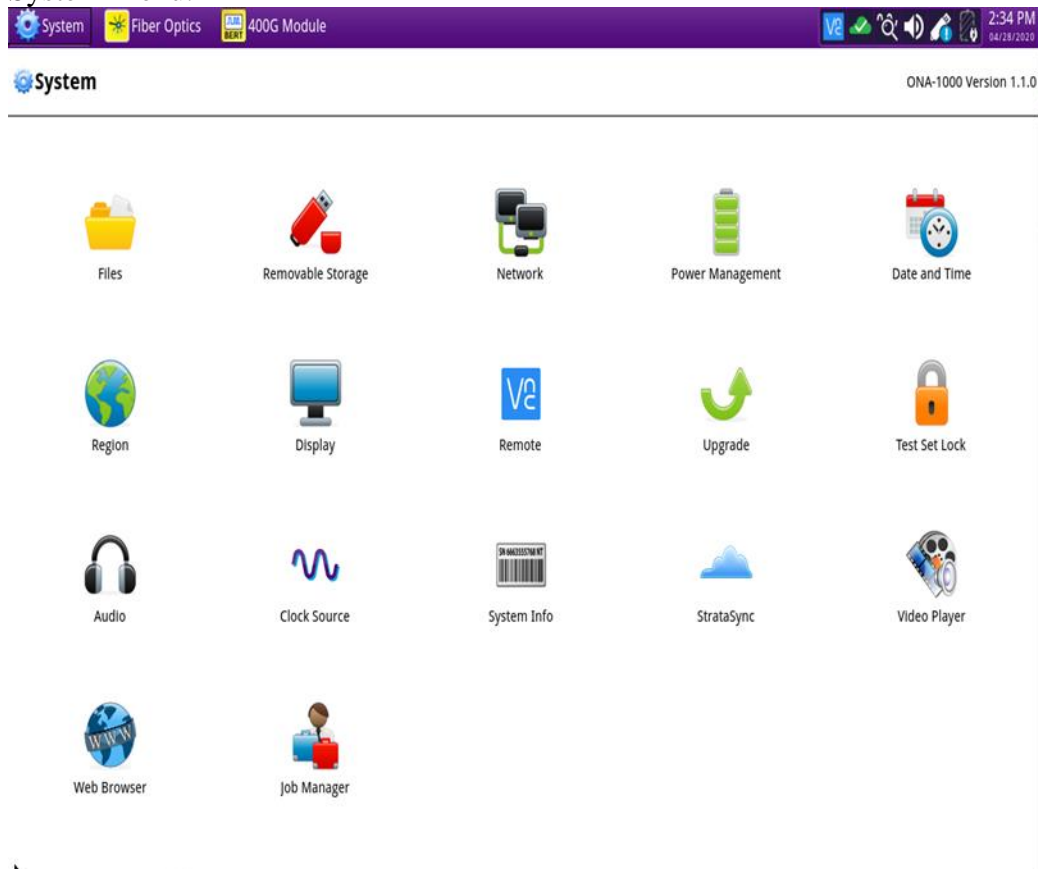
4.        USB Stick                          Insert a USB thumb drive into the USB port on your PC or laptop.

5.        Extract                              Open and run the downloaded file, enter the path of the USB stick, and press  to extract files.

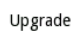




- 6. Eject                                 Once the extract has completed, safely eject the USB drive from your PC or Laptop.
- 7. Power on ONA                     Press and hold the ON/OFF button to turn on the ONA-1000.
- 8. AC Power                           Connect the AC power adapter to the power connector on the right side of the ONA-1000 mainframe.
- 9. USB                                   Connect the USB Thumb Drive to one of the USB ports on the ONA-1000 mainframe. An 8GB or smaller drive is recommended.
- 10. System                             Press the System icon, , at the top of the start-up screen, to display the System Menu.





11. Upgrade Press the Upgrade icon, , to display upgrade methods.

The screenshot shows the ONA-1000 web interface. The top navigation bar includes 'System', 'Fiber Optics', and '400G Module'. The right side of the bar shows system status icons and the time '2:34 PM' on '04/28/2020'. Below the navigation bar, the breadcrumb 'System > Upgrade' is visible, along with the version 'ONA-1000 Version 1.1.0'. The main content area displays the heading 'Select your upgrade method:' followed by two selectable options: 'USB Upgrade from files stored on a USB flash drive.' and 'Network Download upgrade from a web server over the network.'. A 'Start Over' button is located at the bottom left of the main content area.

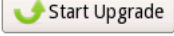
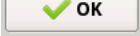
12. Select USB Press  to display upgrade versions available on the USB stick.

System > Upgrade ONA-1000 Version 1.1.0


Name	Upgrade Version	Date	Installed Version	Date
bert_tester	1.1.0-1	04/27/2020	1.1.0-1	04/27/2020

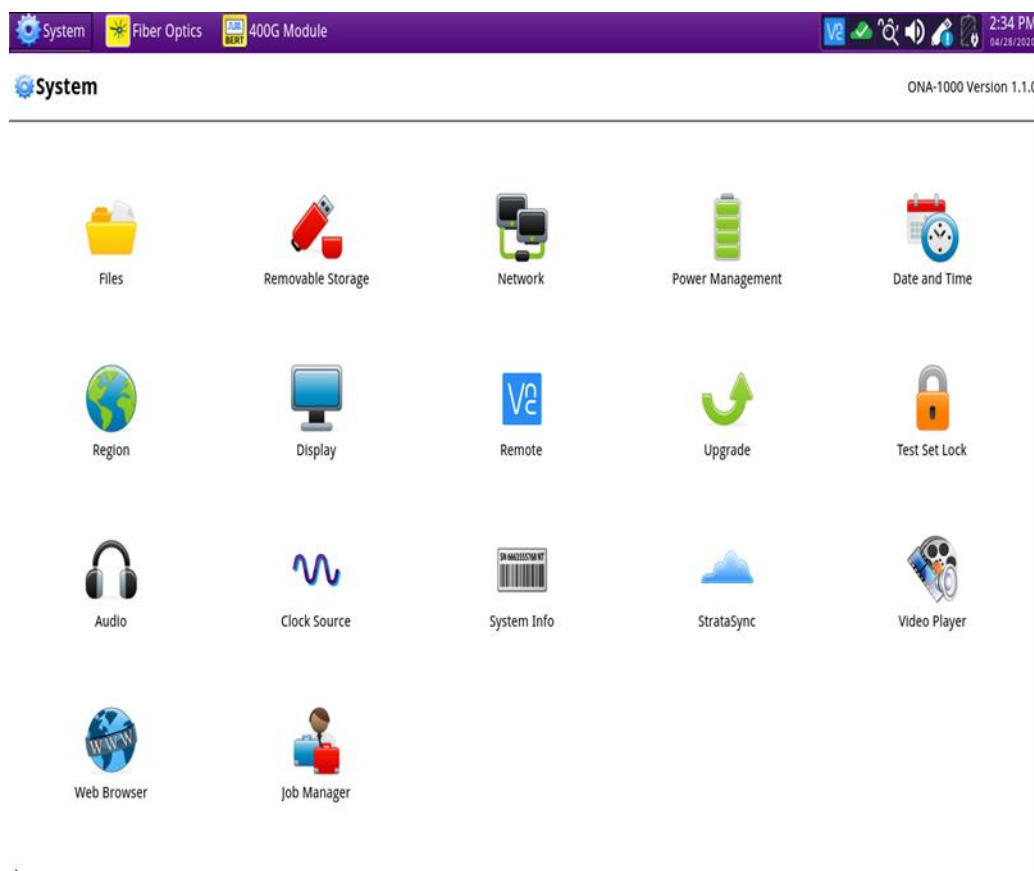
Navigation buttons: Previous, Next, Start Upgrade, Start Over

13.


13.Start Upgrade Press . Press  to initiate the upgrade.

### 3. StrataSync

<i>Step</i>	<i>Action</i>	<i>Details</i>
1.	Power On	Press and hold the ON/OFF button to turn on the ONA-1000.
2.	AC Power	Connect the AC power adapter to the power connector on the right side of the ONA-1000.
3.	LAN Connection	Connect the Ethernet Management Port on the side of ONA-1000 to a network connection with internet access, using CAT 5E or better cable.
4.	System	Press the System icon,  , at the top of the start-up screen, to display the System Menu.





5. Network Settings Press the Network icon, , to display LAN Settings. Set **IP Mode** to “**DHCP**” for automatic IP address assignment or “**Static**” for manual input. If configuring a static address, be sure to include an accurate DNS address or the unit will fail to locate the StrataSync server.

System > Network ONA-1000 Version 1.1.0

LAN

IPv4

IP mode: DHCP

IP address: 10.12.54.172

Gateway: 10.12.54.1

MAC address: 00:80:16:A0:2C:81

Subnet mask: 255.255.255.0


DNS server: 10.107.135.50

IPv6

IPv6 mode: Disabled

VLAN

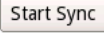
VLAN ID: 100

After configuring LAN settings, press the System icon, , to redisplay the System Menu.



6. StrataSync Press the StrataSync icon, , to display StrataSync Settings. Ensure that **Account ID** and **Technician ID** match those of your StrataSync account.

The screenshot displays the StrataSync web interface. At the top, a purple navigation bar contains icons for 'System', 'Fiber Optics', and '400G Module'. On the right side of the bar, there are system icons and a clock showing '9:32 AM' on '04/30/2020'. Below the navigation bar, the page title is 'System > StrataSync' and the version is 'ONA-1000 Version 1.1.0'. The main content area features three input fields: 'Server address' with the value 'stratasync.viavisolutions.com', 'Account ID' with '16212152', and 'Technician ID' with 'tech'. A 'Start Sync' button is present, and a message states 'Successfully synchronized with server.' Below this, there are four icons representing 'Configuration', 'Report', 'Option', and 'Upgrade'. A 'Reset to Defaults' button is located in the bottom right corner of the main content area.

7. Sync Press  to sync your ONA-1000 400G and initiate upgrades that have been assigned by your company's StrataSync Administrator.